

# **WISTRA ELMETHERM INDIA PVT LTD**

- Started in Jan 2010 ,
- Location : Bangalore – Karnataka , India
- Managing Director : M.S Shivaraj

## **Type of equipment's built**

- **Wistra India Mainly works for Automotive industries.**
- Assembly Lines for automotive applications Like Shock Absorber manufacturing .
- Testing lines , Robotics lines.
- Spinning / Rolling machines
- Special purpose machine etc.
- Industrial Washing Machines.
- Gas Filling machines

# Organization Chart



**SHIVARAJ M S – DIRECTOR**  
**BE –ELECTRICAL & ELCTRONICS**  
**MBA – MARKETING with 25 years of Experience**  
**in machine Tools & Automations**



**Manjunath H.S – General Manager**  
**BE Mechanical with more than 30**  
**years work experience in**  
**manufactruing engineering**



**Vinay Kumar**  
**(Finance)**



**Harinath Reddy**  
**Manager- Design**  
**Mechanical Engineer**  
**with more than 20**  
**years of work**  
**experience**

**Dinesh**  
**Electrical &**  
**Electronics**  
**engineer with**  
**more than 15**  
**years of work**  
**experience**

## **6 Technicians**

- Assembly of machines
- Project Planning.
- Quality Control.
- In house manufacturing
- Customer Trials.
- Installations and Commissioning.

## **2 Assistant**

- Cost Estimation.
- Vendor Development
- Purchase activities.
- Manufacturing activities.

## **2 Assistant**

- Concept design
- Customer Interaction for Design inputs.
- Complete design activities.

## **2 Assistant**

- Electrical and Electronics Design
- PLC Programming
- Commissioning.
- Wiring
- Integration

## **External Auditor**

- Regular accounting.
- Financial Reporting.
- Statutory compliances.
- Payment Follow-ups
- HR Activities

**12<sup>th</sup> Year Anniversary of Wistra India- 18.01.2022**

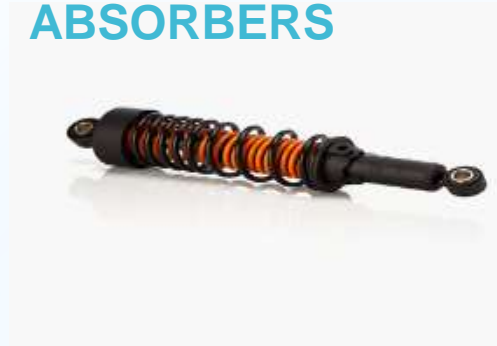


# SPECIAL PURPOSE MACHINE RELATED TO FOLLOWING PARTS

STRUT  
ASSEMBLY



SHOCK  
ABSORBERS



SEAT DAMPERS



CABIN  
DAMPERS



DAMPERS



FRONT  
FORK



MONO SHOX



REAR SHOCK  
ABSORBER

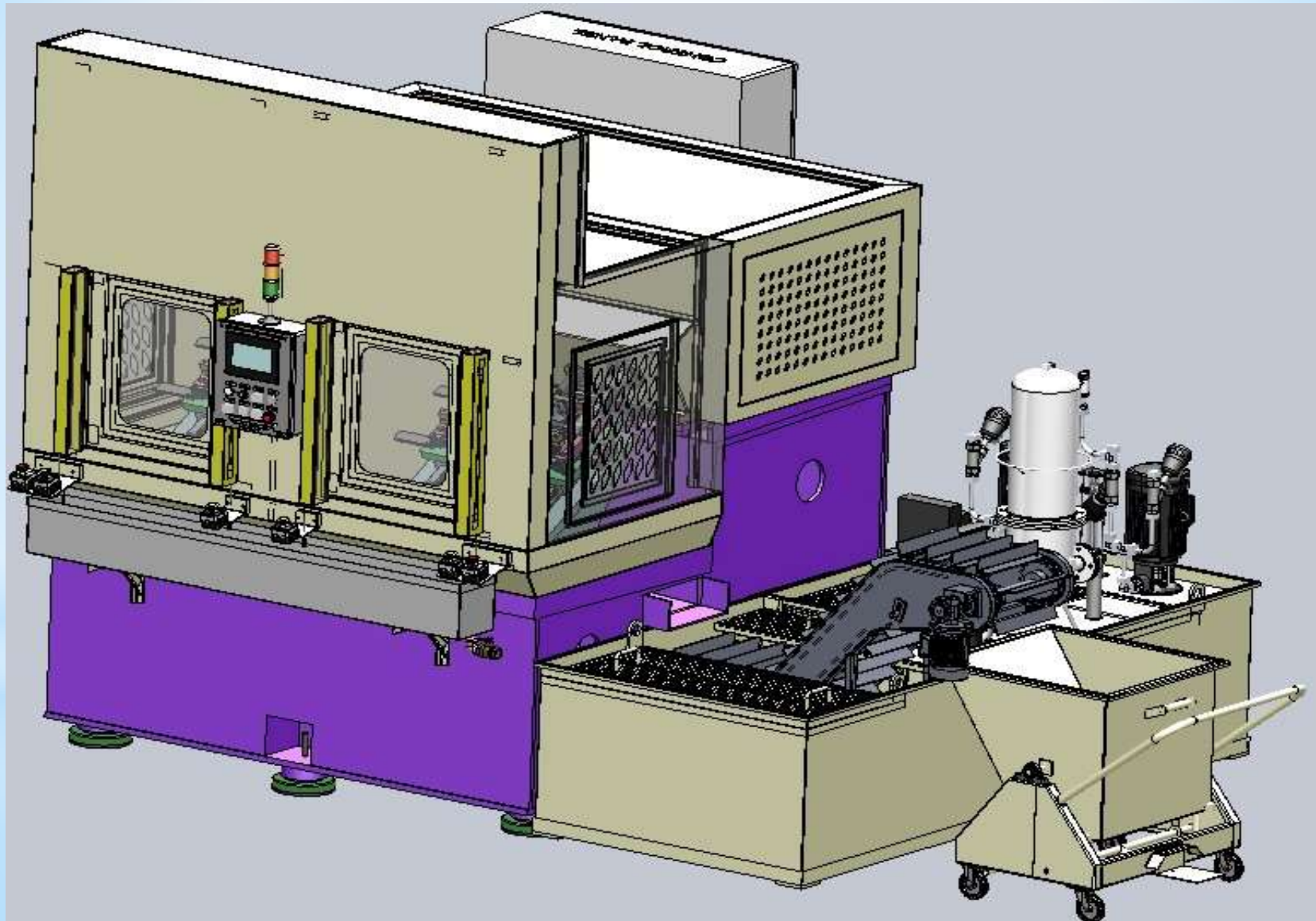


CANISTER SHOCK  
ABSORBER





# We use Solid works to design Equipment's



# TWIN STN FF OUTER TUBE DRILLING M/C





# Shox's Gas filling machines



# HORIZONTAL GAS FILLING MACHINE





# SIDE ROLLER SPINNING MACHINE



# Seaming Machines – for Shox's & Front Forks





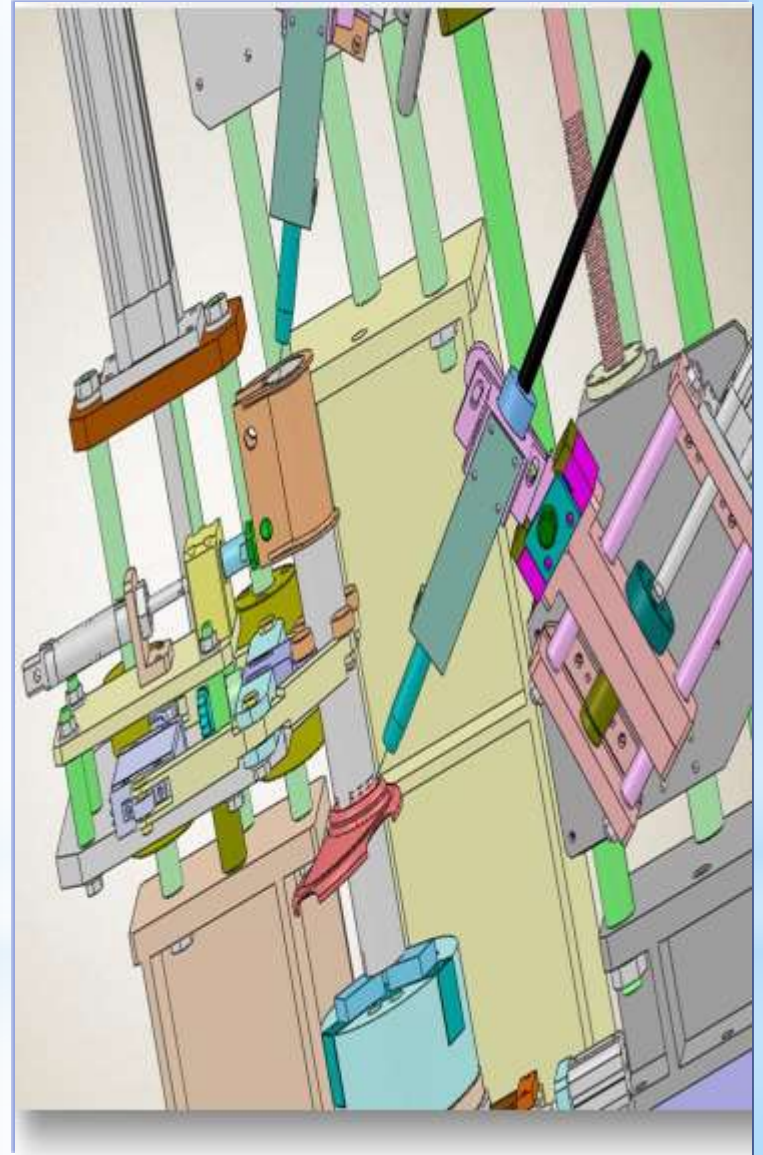
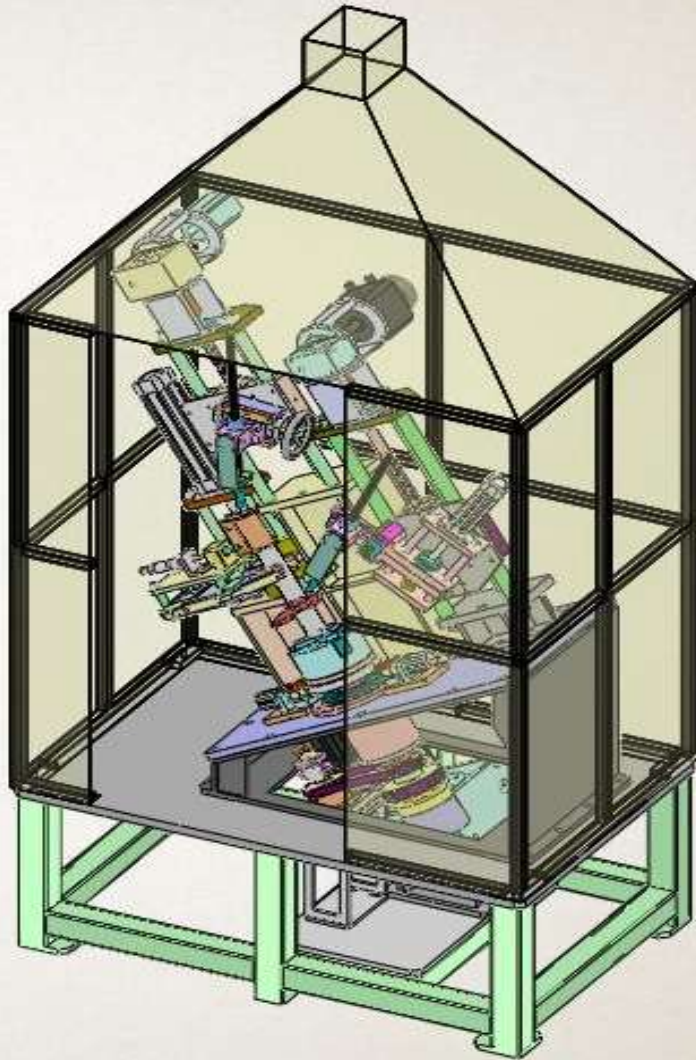
# Spinning Machines







# We use Solid works to design Equipment's

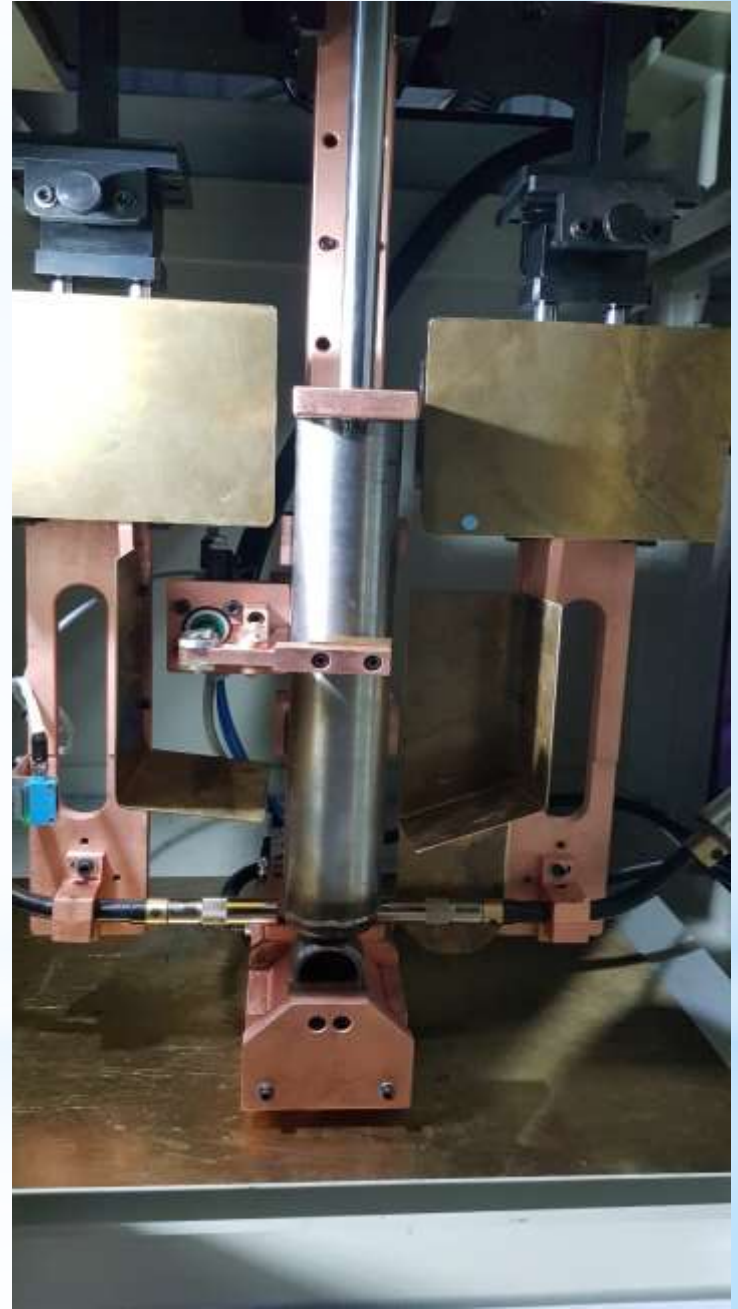




# Two torch welding Machine







# Rod guide pressing



# BASE VALVE COINING AND SLOTTING MACHINE





# SWEGING MACHINE



## Auto nut feeding and torquing



## Bowl feeder for nut feeding.





# Shox's Final Assembly





# Shox Reinforcement Welding machine



- **Features:**
- Panasonic Make *welding unit used.*
- *3 axis servo system used*
- Mitsubishi controller is used.
- Cycle time 12 sec.





# HORIZONTAL WASHING & DRYING MACHINE



# Fanuc Robot for Loading & Unloading machine





# Front fork Assembly Machines



# Limb Assembly Line





# Assembly Machines



# Assembly Machines





# Piston rod Torquing , stacking & Riveting m/c's



# CIRCLIP PRESSING AND CRIMPING





## Piston rod Torquing m/c's



# Pressure tube Torquing machine





# Leak testing m/s and Limb Assembly machine



# Washing and drying machines





## Brushing washing and drying m/c



# Base valve to inner tube Automation





**MAJOR CUTOMERS**

**TENNECO**

**DUROSHOX<sup>®</sup>**

**GABRIEL**



GABRIEL INDIA LTD - PUNE - 4 WHEELER SHOCK'S AND STRUT DIVISION

GABRIEL INDIA LTD - KHANDSA (DELHI) - 4 WHEELER SHOCK'S AND STRUT DIVISION

GABRIEL INDIA LTD - DEWAS - 4 WHEELER SHOCK'S AND STRUT DIVISION

GABRIEL INDIA LTD - PARWANOO - 4 WHEELER SHOCK'S AND STRUT DIVISION

GABRIEL INDIA LTD - HOSUR - 2 / 3 WHEELER SHOCK'S AND FRONT FORK DIVISION

GABRIEL INDIA LTD - NASHIK - 2 WHEELER SHOCK'S AND FRONT FORK DIVISION

ENDURANCE TECHNOLOGIES - AURANGABAD - 2 WHEELER SHOCK'S & FRONT FORK

ENDURANCE TECHNOLOGIES - BANGALORE - 2 WHEELER SHOCK'S & FRONT FORK

ENDURANCE TECHNOLOGIES - GUJARATH - 2 WHEELER SHOCK'S & FRONT FORK

DURO SHOX'S PVT LTD - PUNE - SHOCK'S AND STURT COMMERCIAL VEHICALES

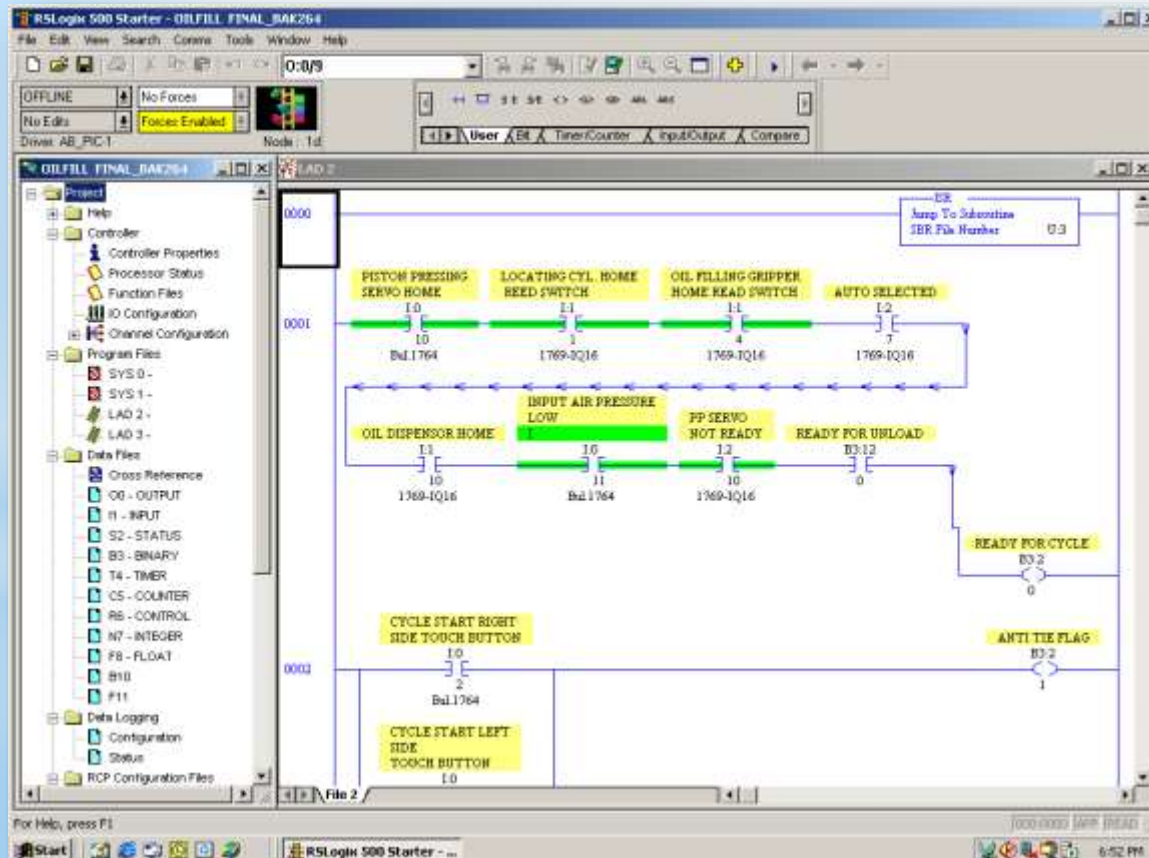
TENNECO AUTOMOTIVES LTD - HOSUR - 4 WHEELER SHOCK'S AND STRUT DIVISION

VALEO FRICTION MATERIAL LTD - CHENNAI - CLUTCH DIVISION

# CONTROL SYSTEMS

## PLC SOFTWARES & Control Systems

□ PLC





# Our Factory



- We have 5000 sq ft Shop Floor with 5 tonne over head crane & 1500 sq ft office space
- We have basic machine like , Lathe , Milling , drilling , welding , compressor etc
- We have Quality control standard room with all necessary measuring instruments
- We have ISO 9000-2015 Certification





**Thank you very much**

**Wistra Elmetherm india pvt ltd**

**No 85 , Kachohalli Idl Area , Bylakonenahalli  
(V) , Kadabagere (P)**

**Next to Magadi road NICE road exit ,  
Bangalore - 560091 .**

**Website : [www.wistraindia.co.in](http://www.wistraindia.co.in)**

**Contact person - M.S Shivaraj - Managing  
Director**

**Mobile : 9880016840 /9900061681**

**Email: [mss.wistra@gmail.com](mailto:mss.wistra@gmail.com)**

**IGST : 29AAACW9277E1ZV**